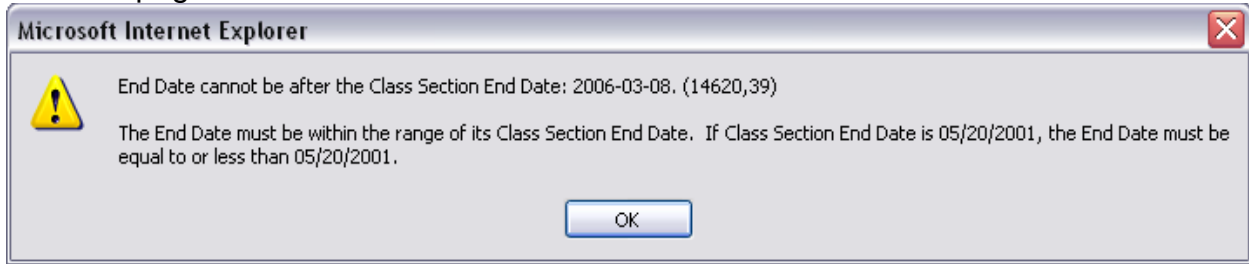
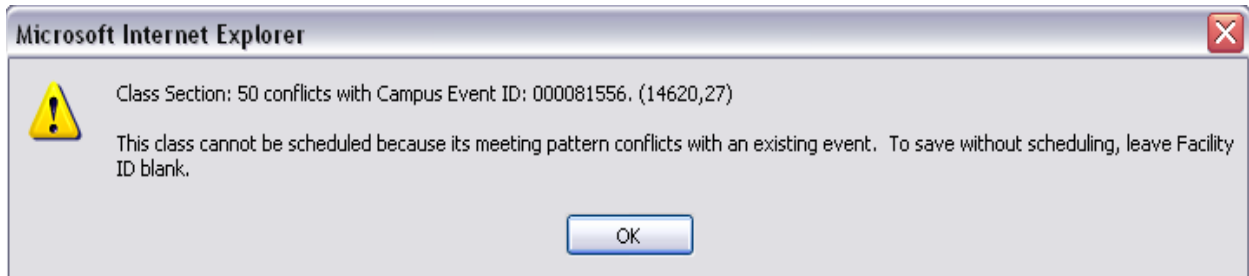


ERROR MESSAGES IN PS 9

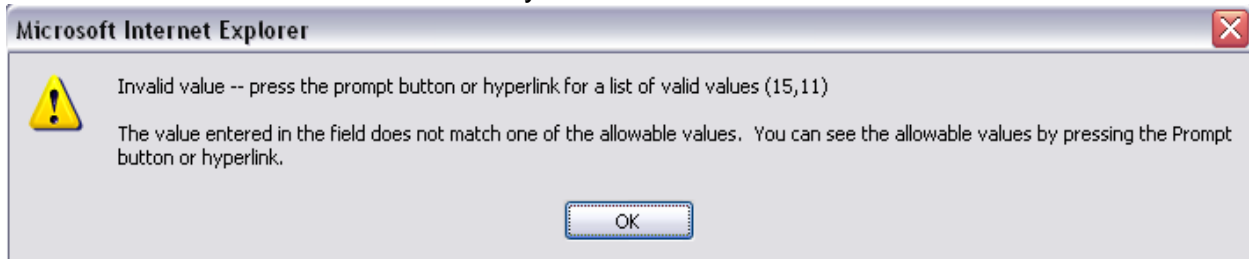
1. Class dates must be changed in both the *Basic Data* page and *Meetings* page before you save the pages.



2. Room, day, and/or time changes made to the meeting pattern conflict with another class. Go to: [Home](#) > [Curriculum Management](#) > [Schedule of Classes](#) > **Class Event Table** to find the class conflict.



3. Information was entered incorrectly.



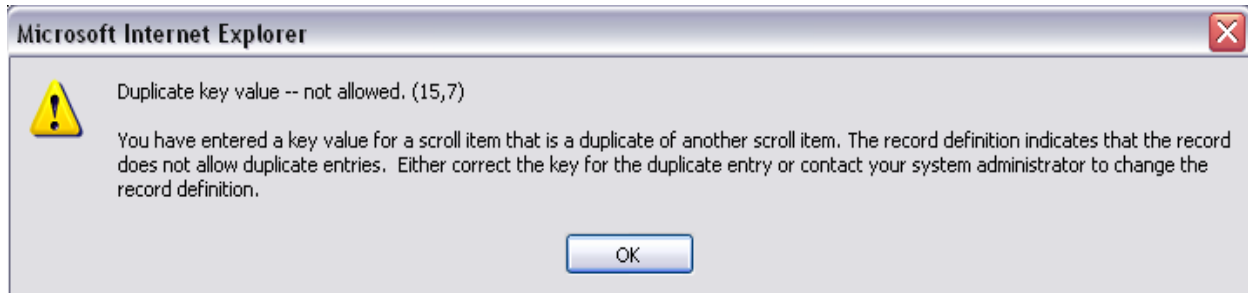
4. Classes cannot have notes in both the canned notes and free format notes fields for the same Sequence Number.

*Sequence Number:

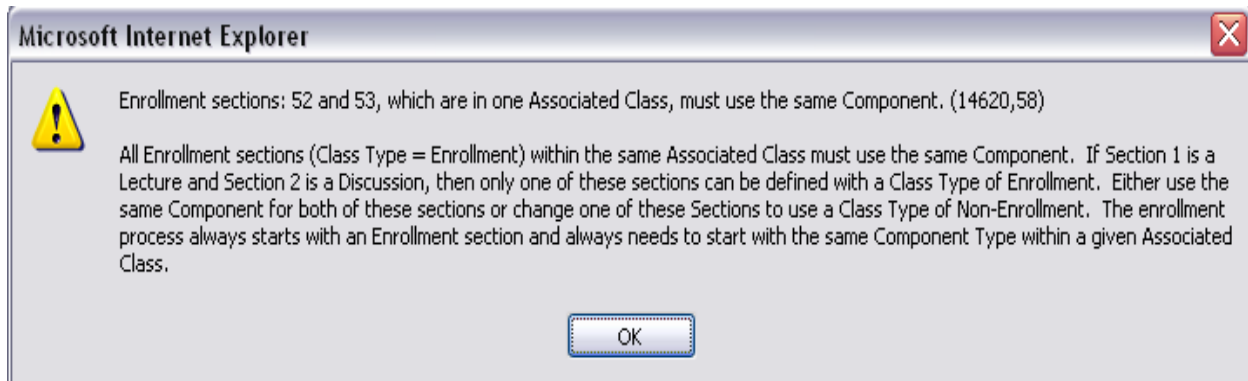


5. This message occurs two different ways:

- Classes are not allowed to have two ACCT Course Attributes/Course Attribute Values
- Within a course, section numbers cannot be used twice
 - Run the Class Component Report to verify the Class Section and Associated Class numbers are accurate

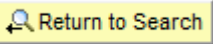


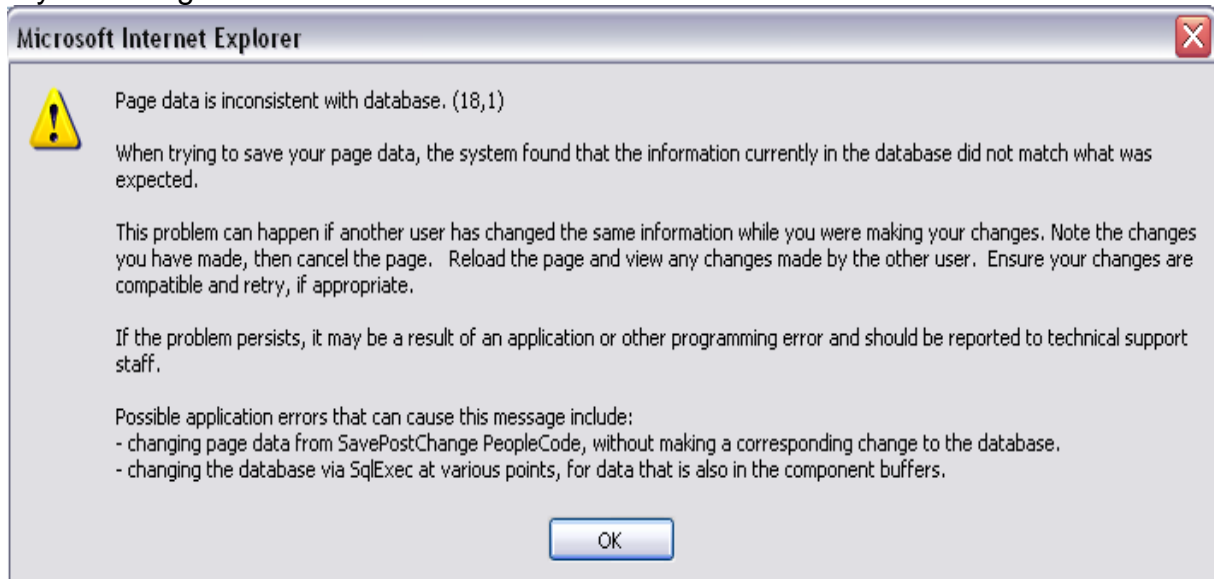
6. Auto-enroll classes must have the same associated number. The LEC must be *Enrollment* and the LAB section must be *Non-Enroll*. For more information, refer to the Class Scheduling Handbook.



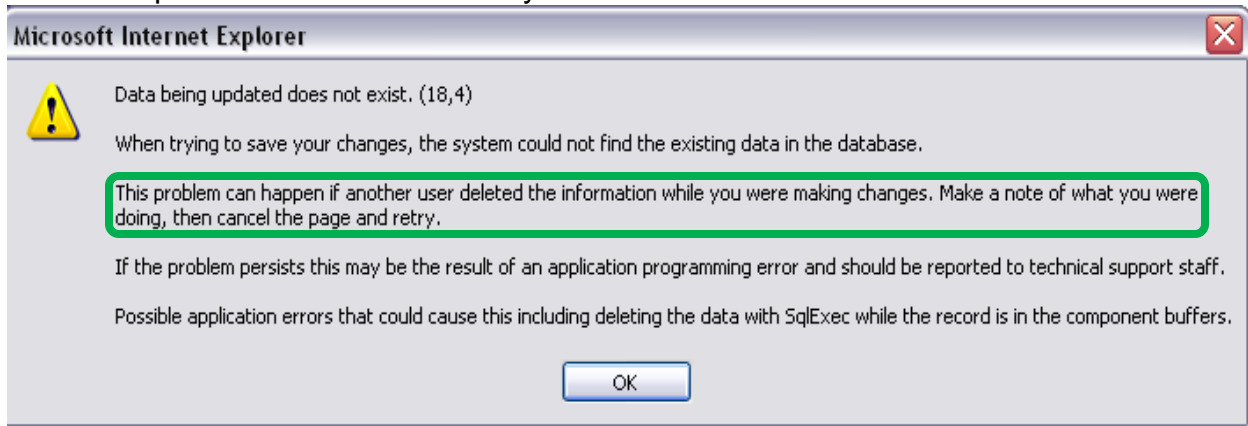
7. This error occurs two different ways:

- Too many class changes were made and were not saved after each one
- Making changes to the *Detail Panel* and then going back to the *Meetings Page* and making changes there

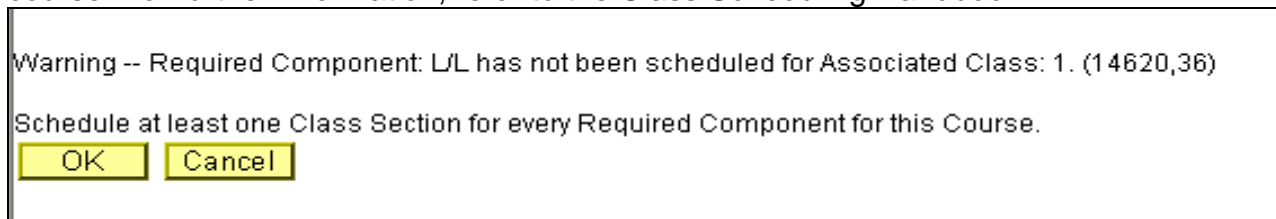
Note: when receiving this error message, you will need to get out of the page you were in – click on “OK” and then click on . You will then have to start over with your changes.



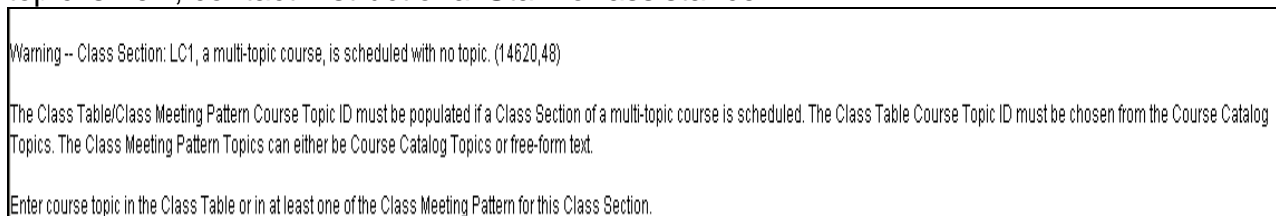
8. See explanation below to see why this error occurs:



9. Class Associations page: need to add or remove a component for a multi-component course. For further information, refer to the Class Scheduling Handbook.



10. Topic classes must have Topic ID assigned to the class in the Basic Data page. If the class topic is new, contact Instructional Staff for assistance.



11. When a second meeting pattern is added to the class, the instructor(s) assigned to the class must be removed from it. Classes cannot have 2 primary instructors.

