

ANCHORAGE NOTES

MEP COMPONENT ANCHORAGE NOTE

ALL MECHANICAL, PLUMBING AND ELECTRICAL COMPONENTS SHALL BE ANCHORED AND INSTALLED PER THE DETAILS ON THE DSA APPROVED CONSTRUCTION DOCUMENTS. WHERE NO DETAIL IS INDICATED THE FOLLOWING COMPONENTS SHALL BE ANCHORED OR BRACED TO MEET THE FORCE AND DISPLACEMENT REQUIREMENTS PRESCRIBED IN THE 2016 CBC, SECTIONS 1616A.1-16 THROUGH 1616A.1.26 AND ASCE 7-10 CHAPTER 13, 26 AND 30.

- ALL PERMANENT EQUIPMENT AND COMPONENTS.
- TEMPORARY OR MOVABLE EQUIPMENT THAT IS PERMANENTLY ATTACHED (E.G. HARD-WIRED) TO BUILDING UTILITY SERVICES SUCH AS ELECTRICITY, GAS, OR WATER.
- MOVABLE EQUIPMENT THAT IS STATIONED IN ONE PLACE FOR MORE THAN 8 HOURS AND HEAVIER THAN 400 POUNDS IS REQUIRED TO BE ANCHORED WITH TEMPORARY ATTACHMENTS.

THE FOLLOWING MECHANICAL AND ELECTRICAL COMPONENTS SHALL BE POSITIVELY ATTACHED TO THE STRUCTURE, BUT THE ATTACHMENT NEED NOT BE DETAILED ON THE PLANS. THESE COMPONENTS SHALL HAVE FLEXIBLE CONNECTIONS PROVIDED BETWEEN THE COMPONENT AND ASSOCIATED DUCTWORK, PIPING, AND CONDUIT.

- COMPONENTS WEIGHING LESS THAN 400 POUNDS AND HAVING A CENTER OF MASS LOCATED 4 FEET OR LESS ABOVE THE ADJACENT FLOOR OR ROOF LEVEL THAT DIRECTLY SUPPORT THE COMPONENT.
- COMPONENTS WEIGHING LESS THAN 20 POUNDS, OR IN THE CASE OF DISTRIBUTED SYSTEMS LESS THAN 5 POUNDS PER FOOT WHICH ARE SUSPENDED FROM A ROOF OR FLOOR OR HUNG FROM A WALL.

FOR THOSE ELEMENTS THAT DO NOT REQUIRE DETAILS ON THE APPROVED DRAWINGS, THE INSTALLATION SHALL BE SUBJECT TO THE APPROVAL OF THE DESIGN PROFESSIONAL IN GENERAL RESPONSIBLE CHARGE OR STRUCTURAL ENGINEER DELEGATED RESPONSIBILITY AND THE DSA DISTRICT STRUCTURAL ENGINEER. THE PROJECT INSPECTOR WILL VERIFY THAT ALL COMPONENTS AND EQUIPMENT HAVE BEEN ANCHORED IN ACCORDANCE WITH THE ABOVE REQUIREMENTS.

PIPING, DUCTWORK, AND ELECTRICAL DISTRIBUTION SYSTEM BRACING NOTE

PIPING, DUCTWORK, AND ELECTRICAL DISTRIBUTION SYSTEMS SHALL BE BRACED TO COMPLY WITH THE FORCES AND DISPLACEMENTS PRESCRIBED IN ASCE 7-10 SECTION 13.3 AS DEFINED IN ASCE 7-10 SECTION 13.6.5.6, 13.6.7, 13.6.8, AND 2016 CBC SECTIONS 1616A.1.23, 1616A.1.24, 1616A.1.25 AND 1616A.1.26.

THE METHOD OF SHOWING BRACING AND ATTACHMENTS TO THE STRUCTURE FOR THE IDENTIFIED DISTRIBUTION SYSTEM ARE AS NOTED BELOW. WHEN BRACING AND ATTACHMENTS ARE BASED ON A PRE-APPROVED INSTALLATION GUIDE (E.G. SMACNA OR OSHPD OPM) COPIES OF THE BRACING SYSTEM INSTALLATION GUIDE OR MANUAL SHALL BE AVAILABLE ON THE JOBSITE PRIOR TO THE START OF AND DURING THE HANGING AND BRACING OF THE DISTRIBUTION SYSTEMS. THE STRUCTURAL ENGINEER OF RECORDS SHALL VERIFY THE ADEQUACY OF THE STRUCTURE TO SUPPORT THE HANGER AND BRACE LOADS.

MECHANICAL PIPING (MP), MECHANICAL DUCTS (MD), PLUMBING PIPING (PP), ELECTRICAL DISTRIBUTION SYSTEMS (E)

MP () MD () PP (X) E () - OPTION 1: DETAILED ON THE APPROVED DRAWINGS WITH PROJECT SPECIFIC NOTES AND DETAILS.
 MP () MD () PP (X) E () - OPTION 2: SHALL COMPLY WITH THE APPLICABLE OSHPD PRE-APPROVED (OPM #) # OPM-4043-13.
 MP () MD () PP (X) E () - OPTION 3: SHALL COMPLY WITH THE SMACNA SEISMIC RESTRAINT MANUAL, OSHPD EDITION (2009), INCLUDING ANY ADDENDA. FASTENERS AND OTHER ATTACHMENTS NOT SPECIFICALLY IDENTIFIED IN THE SMACNA SEISMIC RESTRAINT MANUAL, OSHPD EDITION, ARE BASED ON THE APPROVED DRAWINGS WITH PROJECT SPECIFIC NOTES AND DETAILS. THE DETAILS SHALL ACCOUNT FOR THE APPLICABLE SEISMIC HAZARD LEVEL, AA AND CONNECTION LEVEL, 1 FOR THE PROJECT AND CONDITIONS.

NOTE: CANNOT COMBINE FOR A SINGLE SYSTEM. SYSTEM TO BE ONE OR ANOTHER.

PLUMBING LEGEND AND ABBREVIATIONS

SYMBOL	ABBREV.	DESCRIPTION	SYMBOL	ABBREV.	DESCRIPTION
	POC	POINT OF CONNECTION		ABV	ABOVE
	W	WASTE OR SEWER BELOW SLAB		AC	ABOVE CEILING
	W	WASTE OR SEWER ABOVE SLAB		A.F.F.	ABOVE FINISH FLOOR
	V	SANITARY VENT		A.F.G.	ABOVE FINISH GRADE
	CW	COLD WATER		AG	ABOVE GRADE
	HW	HOT WATER		A.P.	ACCESS PANEL
	HWR	HOT WATER RETURN		BF	BELOW FLOOR
	CA	COMPRESSED AIR		BG	BELOW GRADE
	SOV	SHUT OFF VALVE		CFH	CUBIC FEET PER HOUR
	PRV	PRESSURE REDUCING VALVE		DWGS	DRAWINGS
	FS	FLOOR SINK		EA	EACH
	FD	FLOOR DRAIN		EXIST.	EXISTING
	FCO	FLOOR CLEAN-OUT		(E)	EXISTING
	WCO	WALL CLEAN-OUT		FT	FEET OR FOOT
	GCO	GRADE CLEAN-OUT		FDC	FIRE DEPARTMENT CONNECTION
	DN	DOWN OR DROP		F	FIRE RISER
	UP	RISE OR RISER		FLR	FLOOR
	HB	HOSE BIBB		G.P.F.	GALLONS PER FLUSH
	U	VALVE ON RISE OR DROP		G.P.H.	GALLONS PER HOUR
	U	UNION		G.P.M.	GALLONS PER MINUTE
	RV	TEMPERATURE & PRESSURE RELIEF VALVE		IE	INERT ELEVATION
	F	FIRE SPRINKLER PIPING		KG	KILOGRAMS
	CD	CONDENSATE DRAIN PIPING		KPa	KILOPASCALS
	FDC	FIRE DEPARTMENT CONNECTION		L.P.F.	LITERS PER FLUSH
	CP	CIRCULATING PUMP		L/S	LITERS PER SECOND
	CV	CHECK VALVE		MSA	MEDIUM PRESSURE GAS METER
	TP	TRAP PRIMER		mm	MILLIMETER
	WHA	WATER HAMMER ARRESTOR		NTS	NOT TO SCALE
	REG	GAS REGULATOR W/ SHUT-OFF VALVE		ORD	OVERFLOW/ROOF DRAIN
				LB	POUNDS
				PSI	POUNDS PER SQUARE INCH
				RD	ROOF DRAIN
				SA	SET ASSEMBLY
				SF	SQUARE FEET
				T.D.H.	TOTAL DEVELOPED HEAD
				V.T.R.	VENT THROUGH ROOF
				W.C.	WATER COLUMN
				WHA	WATER HAMMER ARRESTOR

GENERAL NOTES

- THESE DRAWINGS ARE A GENERAL GRAPHIC PRESENTATION OF THE WORK, PIPING AND EQUIPMENT, AS SHOWN, ARE SCHEMATIC, FABRICATE AND INSTALL BASED ON ACTUAL FIELD MEASUREMENT. COORDINATE WITH OTHER TRADES. PROVIDE A COMPLETE SET OF SHOP DRAWINGS REFLECTING ACTUAL INSTALL, ACCESS REQUIREMENTS, AND DETAILS BASED UPON THE ACTUAL EQUIPMENT PROCURED. MAINTAIN AN UP TO DATE SET OF AS-BUILT DRAWINGS AT THE JOB SITE.
- COMPLY WITH CALIFORNIA MECHANICAL CODE (CMC), CALIFORNIA PLUMBING CODE (CPL), AND NATIONAL FIRE PROTECTION AGENCY (NFPA) AND GOVERNING CODES. THERE SHALL BE NO EXCEPTION, REPORT DEFICIENCIES WITHIN THIRTY (30) DAYS UPON AUTHORIZATION TO PROCEED.
- PROVIDE ACCESS AND CLEARANCE FOR MAINTENANCE FOR MECHANICAL & PLUMBING EQUIPMENT AND COMPONENTS AS RECOMMENDED BY THE EQUIPMENT MANUFACTURER AND APPLICABLE CODES.
- HANDLE, STORE AND INSTALL EQUIPMENT PER MANUFACTURERS INSTRUCTIONS.
- NO PLUMBING SHALL BE INSTALLED UNTIL ALL REQUIRED PLUMBING PLAN CHECK PERMITS AND APPROVALS HAVE BEEN OBTAINED FROM ALL REQUIRED AGENCIES.
- LAVATORY FAUCETS, SINK FAUCETS (NOT INCLUDING SERVICE SINK FAUCETS OR FAUCETS DESIGNATED AT INSTITUTIONAL), SHALL MEET THE FLOW REQUIREMENTS OUTLINED IN THE APPLIANCE EFFICIENCY STANDARDS.
- COORDINATE WITH THE ARCHITECTURAL DRAWINGS FOR EXACT LOCATION OF PLUMBING FIXTURES AND DRAINS.
- HOSE BIBBS SHALL BE PROTECTED BY AN APPROVED NON-REMOVABLE TYPE BACKFLOW PROTECTION DEVICE. HOSE BIBBS SHALL BE MOUNTED AT +1' ABOVE FLOOR UNLESS OTHERWISE NOTED.
- PROVIDE ALL TAILPIECES, TRAPS, STOPS, SUPPLY PIPES TO LAVATORIES DESIGNED AS ACCESSIBLE, WITH PREFORMED INSULATION JACKET.
- COORDINATE AND VERIFY SIZES, LOCATIONS, DEPTHS AND PRESSURIZED PIPING PRESSURES OF ALL BUILDING UTILITIES WITH CIVIL.
- COORDINATE AND SCHEDULE TIMING FOR UTILITY SERVICE CONNECTION.
- ALL LINES BELOW SLAB ON GRADE TO BE LOCATED AWAY FROM ALL LOAD BEARING FOOTINGS.
- ALL LINES RUNNING BELOW GRADE BEAMS OR PENETRATING, SEE STRUCTURAL DRAWINGS FOR CONSTRUCTION.
- ALL VENTS THRU ROOF SHALL BE MINIMUM OF 18 INCHES VERTICAL AND FIFTEEN FEET HORIZONTAL AWAY FROM ALL AIR CONDITIONING FRESH AIR INTAKES AND PROVIDED WITH VANDAL PROOF HOODS.
- CONTRACTOR SHALL BE RESPONSIBLE FOR ALL CUTTING AND PATCHING OF WALLS, ROOFS, FOOTINGS, FLOORS, INCLUDING ALL SAW CUTTING AND CORE DRILLING. COORDINATE ALL SAW CUTTING AND CORE DRILLING WITH STRUCTURAL DRAWINGS. ANY CUTTING AND DRILLING REQUIRED OF STRUCTURAL ELEMENTS THAT IS NOT SPECIFICALLY SHOWN ON THE PLANS SHALL BE BROUGHT TO THE ARCHITECTS ATTENTION PRIOR TO CUTTING AND DRILLING. CONTRACTOR SHALL SUBMIT PROPOSED LOCATION AND SIZES OF SUCH CUTTING AND DRILLING FOR THE ARCHITECTS AND STRUCTURAL ENGINEERS APPROVAL.
- COORDINATE ALL EQUIPMENT LOCATIONS, PIPE PENETRATIONS AND EQUIPMENT PAD LOCATIONS WITH STRUCTURAL DRAWINGS PRIOR TO WORK.
- COORDINATE INSTALLATION OF ALL EQUIPMENT AND PIPING WITH OTHER TRADES PRIOR TO INSTALLATION. ENSURE THAT ALL CONTROL DEVICES, SHUT-OFF VALVES, ETC. ARE ACCESSIBLE FOR MAINTENANCE. WHERE ACCESS PANELS IN FINISHED SPACES, OTHER THAN THAT SHOWN, CONTRACTOR SHALL PROVIDE AND COORDINATE EXACT LOCATION OF PANELS WITH ARCHITECT PRIOR TO INSTALLATION.
- INSTALL VALVES WITH UNIONS OR FLANGES AT EACH PIECE OF EQUIPMENT ARRANGED TO ALLOW SERVICE, MAINTENANCE, AND EQUIPMENT REMOVAL WITHOUT SYSTEM SHUT-DOWN.
- ANY STRUCTURAL FIREPROOFING DAMAGED DURING INSTALLATION OF PLUMBING EQUIPMENT, PIPING, ETC. SHALL BE REPAIRED AT NO COST TO THE OWNER. REPAIRS SHALL BE AS DIRECTED BY THE ARCHITECT.
- PROVIDE VACUUM BREAKERS AT HOSE BIBBS.
- FAUCETS TO BE 1.8 GPM MAXIMUM.
- WATER HEATER IS TO BE USED ON CALIFORNIA ENERGY COMMISSION (CEC) LIST.
- PROVIDE EXPANSION TANK OR OTHER APPROVED METHOD OF RELIEVING PRESSURE (SECTION 608.3 CPC).
- CROSS CONNECTION PROTECTION SHALL BE PROVIDED AT ALL POTABLE WATER SUPPLIED APPLIANCES AND EQUIPMENT.
- COORDINATE WITH ELECTRICAL AND CONTROL CONTRACTORS FOR ALL POWER REQUIREMENTS PRIOR TO BID.
- COORDINATE WITH ELECTRICAL AND CONTROL CONTRACTORS FOR ALL POWER REQUIREMENTS PRIOR TO ORDERING ANY EQUIPMENT.
- UPON INSTALLATION OF ALL EQUIPMENT, DEVICES, VIBRATION ISOLATION, ETC., PROVIDE WRITTEN CONFIRMATION BY EQUIPMENT MANUFACTURER'S REPRESENTATIVES TO ENSURE COMPLIANCE WITH MANUFACTURER'S REQUIREMENTS.
- PROVIDE DETAILS AND SEISMIC CALCULATIONS FOR ALL EQUIPMENT ON VIBRATION ISOLATION. ALL DETAILS SHALL BE STAMPED BY A STRUCTURAL ENGINEER FROM VIBRATION ISOLATIONS MANUFACTURER.
- FOR EACH SUBMITTAL, THE CONTRACTOR SHALL PROVIDE A LETTER (ON COMPANY LETTERHEAD) AND SIGNED BY THE PROJECT MANAGER INDICATING THE SUBMITTAL HAS BEEN FULLY IN HOUSE REVIEWED TO ENSURE FULL COMPLIANCE WITH THE CONTRACT DOCUMENTS AND COORDINATION WITH OTHER TRADES. ANY EXCEPTIONS TO THE CONTRACT DOCUMENTS SHALL BE CLEARLY INDICATED ON THIS LETTER. ANY DISCREPANCIES/EXCEPTIONS NOT IDENTIFIED IN WRITING SHALL BE CORRECTED AT THE SOLE EXPENSE OF THE CONTRACTOR AND AT NO EXPENSE TO THE OWNER AND ENGINEER.
- THE CONTRACTOR SHALL SELECT ALL CIRCUIT SETTING/BALANCING VALVES FOR ACTUAL FLOW THROUGH THE PIPE AND THE PROPER PRESSURE DROP TO ENSURE PROPER OPERATION AND NOT BASED ON PIPE SIZES.
- THE DETAILS SHALL ACCOUNT FOR THE APPLICABLE SEISMIC HAZARD LEVEL AA AND CONNECTION LEVEL 1 FOR THE PROJECT AND CONDITIONS.

KEYNOTES

#	DESCRIPTION
1	PROGRESS SET: 3.29.18

NOTES

#	DESCRIPTION
1	PROGRESS SET: 3.29.18

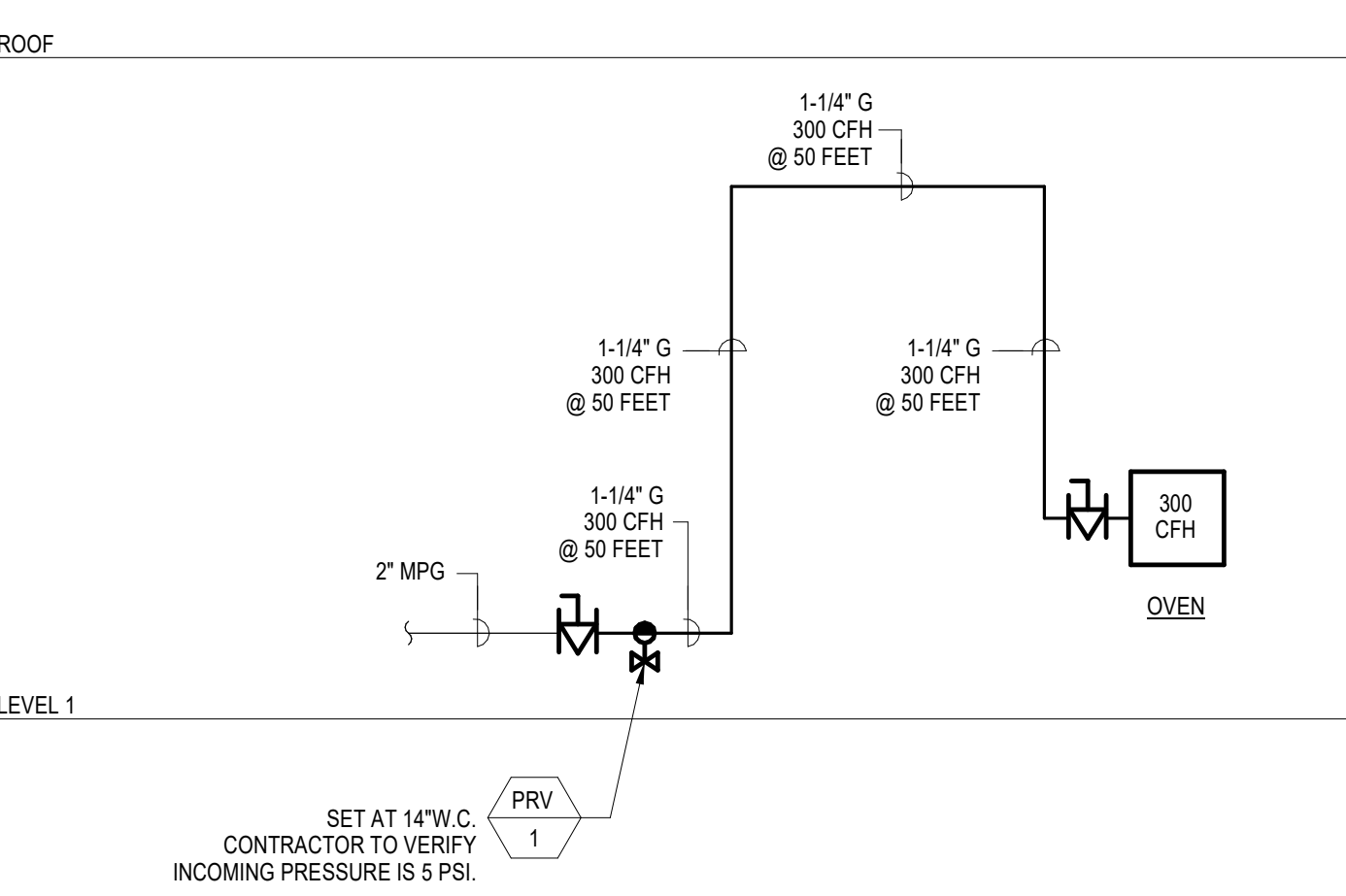
GAS LOAD SUMMARY

ITEM	QUANTITY	BTU EACH	CFH EACH	TOTAL - CFH
OVEN	1	300,000	300	= 300
TOTAL				= 300 CFH

PIPE SIZING CHART BASED ON 50 FT. TOTAL DEVELOPED LENGTH.

* NOTE: TOTAL DEVELOPED LENGTH TAKEN FROM REGULATOR TO MOST REMOTE APPLIANCE AT LOW PRESSURE PIPE SIZING BASED ON 2016 CALIFORNIA PLUMBING CODE, TABLE 12-16, (0.5 IN W.C. PRESSURE DROP)

LABEL MEDIUM PRESSURE GAS EVERY 5 FEET.
 PIPE MATERIAL IS SCHEDULE 40 STEEL.



1 FABRICATION BUILDING 1 - RISER DIAGRAM
 NO SCALE

PLUMBING FIXTURE SCHEDULE

SYMBOL	FIXTURE	ROUGH-IN					REMARKS
		HW	CW	W	TRAP	V	
	SINK	1/2"	1/2"	2"	1 1/2"	1 1/2"	COUNTERTOP SINK, GOOSENECK FAUCET.
	FLOOR DRAIN	--	--	2"	2"	1 1/2"	BRONZE GRATE, PROVIDE AUTOMATIC TRAP PRIMER, FLOOR DRAIN JAY R. SMITH MODEL # 2050C.
	FLOOR SINK	--	--	4"	2"	1 1/2"	PROVIDE AUTOMATIC TRAP PRIMER, FLOOR SINK SHALL BE 18"x18".
	TRAP PRIMER	--	1/2"	--	--	--	FLOOR SINKS/DRAINS.
	HOSE BIBB	--	3/4"	--	--	--	ROUGH BRASS PROVIDE WITH VACUUM BREAKER, HOSE BIBB JAY R. SMITH MODEL # 5870-H.
	EMERGENCY EYEWASH SHOWER	1 1/2"	1 1/2"	--	--	--	FLOOR MOUNT, PROVIDE WITH HOT WATER TEMPERED VALVE, FLOW SWITCH, LOCAL AUDIBLE ALARM SILENCING SWITCH, FLASHING STROBE LIGHT.
	COMPRESSED AIR OUTLET	--	--	--	--	--	SEE DETAIL 3/PS.1.
	MIXING VALVE	1 1/2"	1 1/2"	--	--	--	THERMOSTATIC MIXING VALVE, EMERGENCY EYEWASH SHOWER.

PLUMBING EQUIPMENT SCHEDULE

SYMBOL	TYPE	ELECTRICAL DATA				CAPACITY		STORAGE VOLUME (GALLON)	WEIGHT (LBS)	DESCRIPTION
		POWER (HP)	VOLTS (V)	PHASE (PH)	HERTZ (HZ)	INPUT (MBH)	OUTPUT (MBH)			
	ELECTRIC WATER HEATER	54 KW	480	3	--	--	100	--	--	ELECTRIC WATER HEATER UNIT ENCLOSED IN A POWDER-COATED, COLD ROLLED STEEL NEMA 4 RATED CABINET.
	AIR COMPRESSOR	15	480	3	60	--	--	1,735	--	FIXED-SPEED ROTARY-SCREW COMPRESSOR, 45 CFM @ 125 PSIG.
	SAND OIL INTERCEPTOR	--	--	--	--	--	--	320	6,800	TANK DESIGNED FOR HS-20 TRAFFIC WHEEL LOAD 3'-0"W x 7'-0"L x 4'-6" H. JENSEN PRECAST MODEL # KJPS390.
	GAS PRESSURE REGULATOR	--	--	--	--	--	--	--	--	SET AT 14" W.C. CONTRACTOR TO VERIFY INCOMING PRESSURE IS 5 PSI.

Consultant Seal:

Agency Approval: IDENTIFICATION STAMP DIV. OF THE STATE ARCHITECT
 APPL. 04-115420
 ACS: _____ FLS: _____ SSS: _____
 DATE: _____

Project Title: **PALOMAR COLLEGE**
 NEW STORAGE BUILDINGS
 1140 W. MISSION RD., SAN MARCOS, CA 92069 (760) 744-1150

No.	Description	Date
1	ISA BACKCHECK	10/18/2017
2	ADDENDUM 2	06/08/2018
3	PRE-BID RFI	10/03/2018

PLUMBING GENERAL NOTES, LEGEND, AND SCHEDULES

Architect's Seal:

Designer: **Author** Project No: 3443001-302
 Scale: NO SCALE
 Designer: **Author**
 GAO: **Checker** Drawing No. **P0.1**
 Date: 10/18/17

KEYNOTES

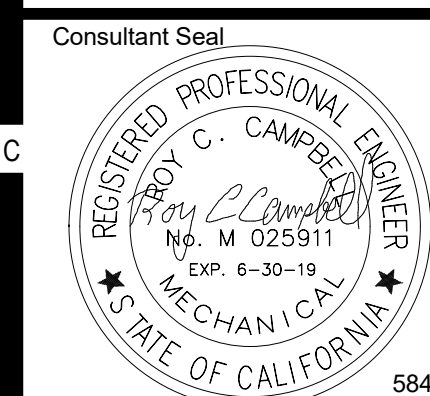
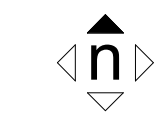
NOTES

1. PROGRESS SET: 3.29.18



5160 Carroll Canyon Rd, Suite 200
 San Diego, California 92121
 Consulting Mechanical Engineers
 ☎ 858 200-0030 ☎ 858 200-0037
 www.ma-enr.com

Key Plan



Agency Approval FILE NO: 37-C1
 IDENTIFICATION STAMP
 DIV. OF THE STATE ARCHITECT
 APPL 04-115420
 ACS _____ FLS _____ SSS _____
 DATE _____

Project Title

PALOMAR COLLEGE
 Learning for Success
PALOMAR COLLEGE
 NEW STORAGE BUILDINGS
 1140 W. MISSION RD.
 SAN MARCOS, CA 92069
 (760) 744-1150

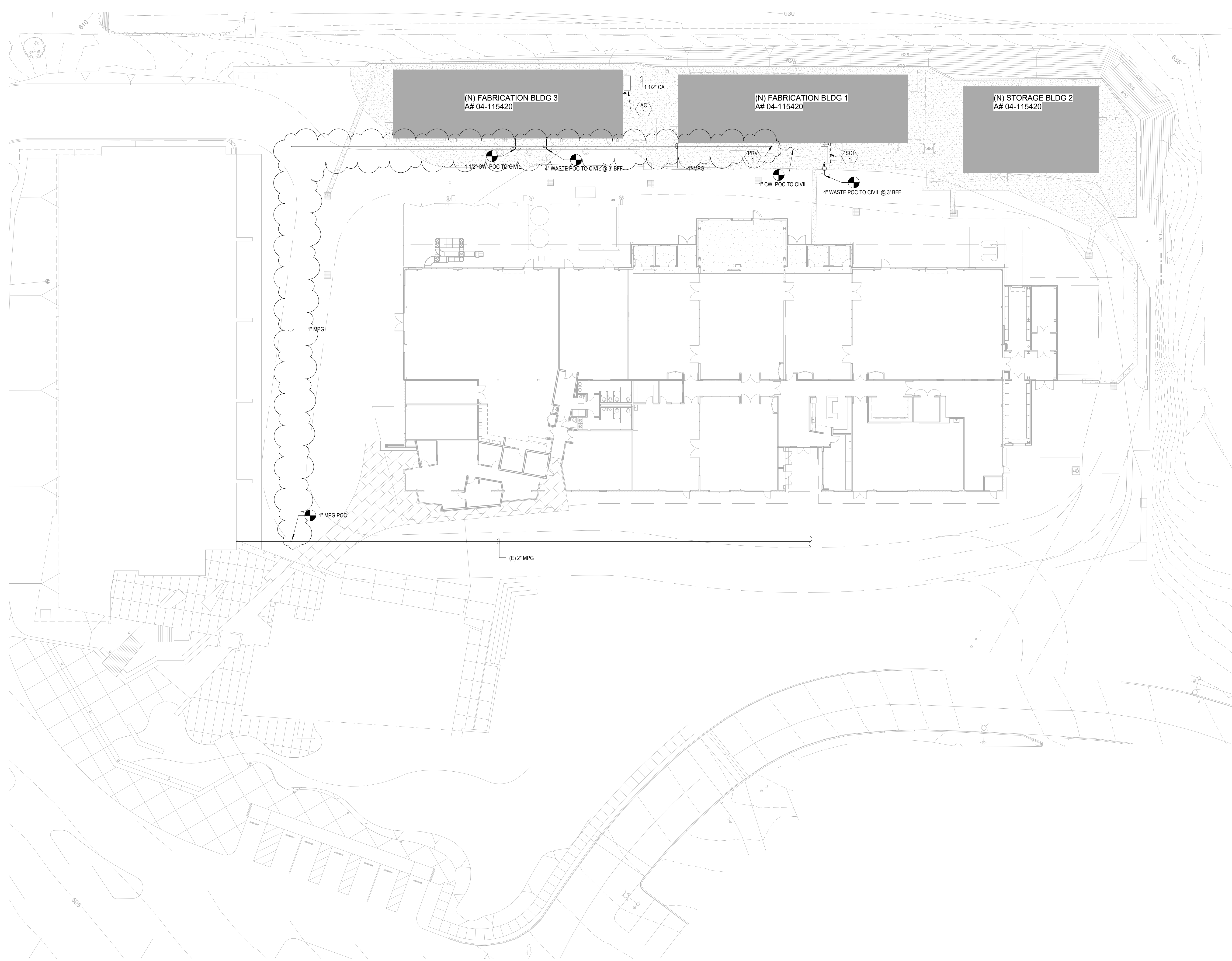
No.	Description	Date
1	DSA BACKCHECK	10/18/2017
2	ADDENDUM 2	06/08/2018
3	PRE-BID RFI	10/03/2018

Drawing Title:
PLUMBING OVERALL SITE PLAN



Architect's Seal Designer Project No. 3443001-302
 Drawn: Author Scale: 1" = 20'-0"
 QA/QC Checker Drawing No. P1.1
 Date: 10/18/17

PLUMBING OVERALL SITE PLAN 1
 1" = 20'-0"



C:\REVIT PROJECTS\5841_CENTRAL_PLBG_A\illiasnorCPUBN.rvt

KEYNOTES

- 1 1" COMPRESSED AIR BELOW GRADE.
- 2 1" COMPRESSED AIR UP.
- 3 2" VTR.
- 4 ROUTE 1" COMPRESSED AIR TO COMPRESSED AIR OUTLET.
- 5 FOR TYPICAL PIPE HANGER DETAIL, SEE 2/PS.1.
- 6 FOR AIR COMPRESSOR OUTLET DETAIL, SEE 3/PS.1.
- 7 3/4" CW BELOW GRADE.
- 8 1" CW BELOW GRADE POC TO CIVIL. SEE CIVIL DRAWINGS FOR CONTINUATION.
- 9 2" VENT UP.
- 10 MECHANICAL EQUIPMENT SHOWN FOR REFERENCE ONLY.
- 11 FOR SAND-OIL INTERCEPTOR DETAIL, SEE 8/PS.2.
- 12 FOR GAS PIPING ABOVE GROUND PROVIDE SEISMIC ANCHORAGE PER ANCHORAGE NOTES ON PG. 1.
- 13 3" VENT UP.
- 14 3" VTR.

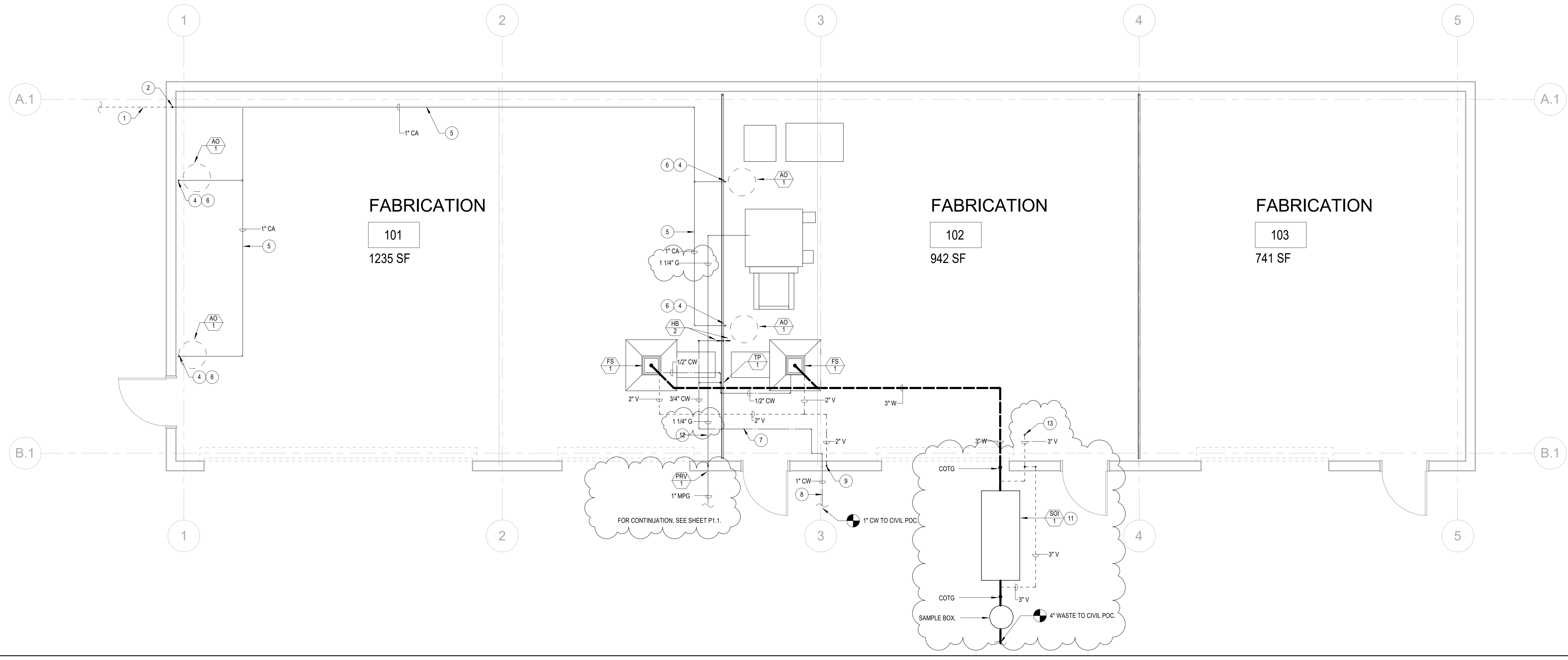
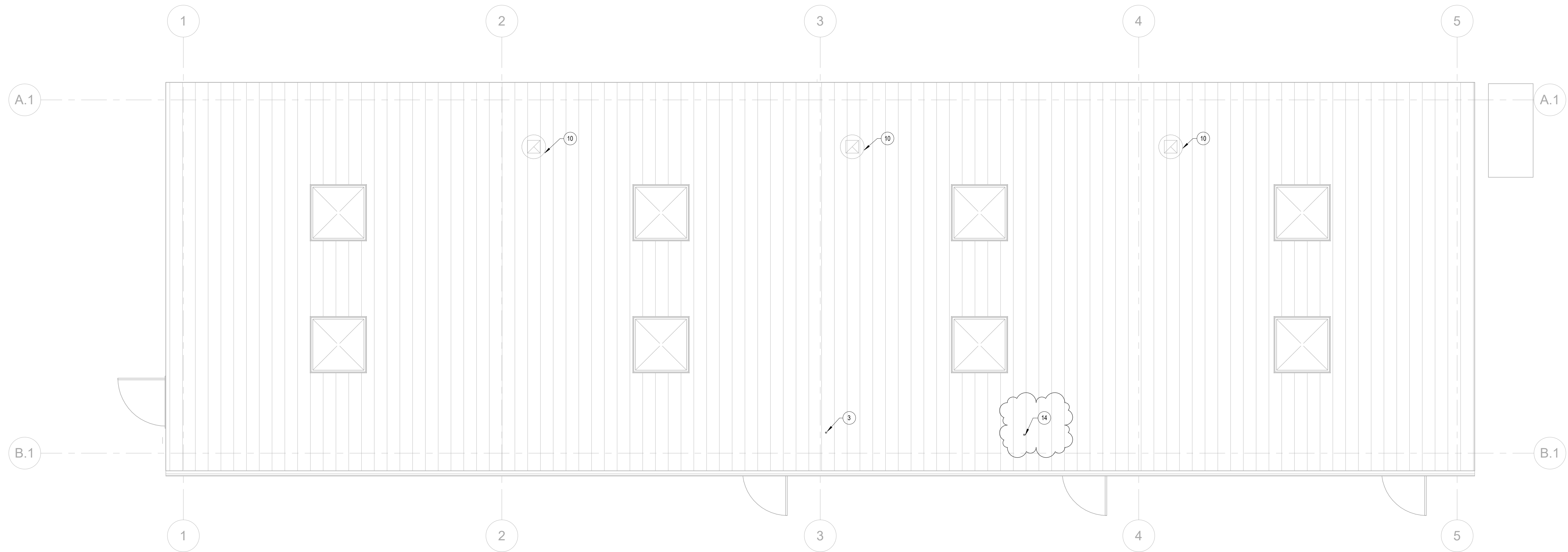
NOTES

- 1- FOR AIR COMPRESSOR ANCHORAGE DETAIL, REFER TO DTL. 14 12

PLUMBING FABRICATION BUILDING 1 - ROOF PLAN

1

1/4" = 1'-0"



PLUMBING FABRICATION BUILDING 1 - FLOOR PLAN

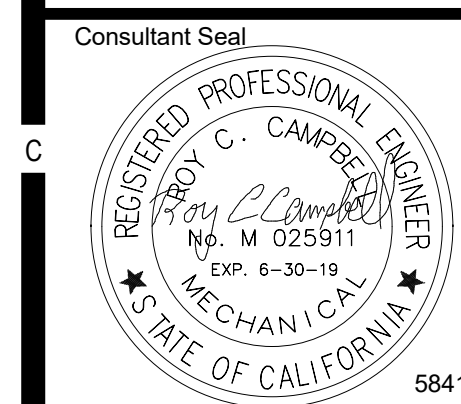
2

1/4" = 1'-0"



5160 Carroll Canyon Rd, Suite 200
 San Diego, California 92121
 Consulting Mechanical Engineers
 858 200-0030 858 200-0037
 www.ma-engr.com

Key Plan



Agency Approval FILE NO. 37-C1
 IDENTIFICATION STAMP
 DIV. OF THE STATE ARCHITECT
 APPL. 04-115420
 ACS FLS SSS
 DATE

Project Title

PALOMAR COLLEGE
 Learning for Success
PALOMAR COLLEGE
 NEW STORAGE BUILDINGS
 1140 W. MISSION RD.
 SAN MARCOS, CA 92069
 (760) 744-1150

No.	Description	Date
1	ISA BACKCHECK	10/18/2017
2	ADDENDUM 2	06/08/2018
3	PRE-BID RFI	10/03/2018

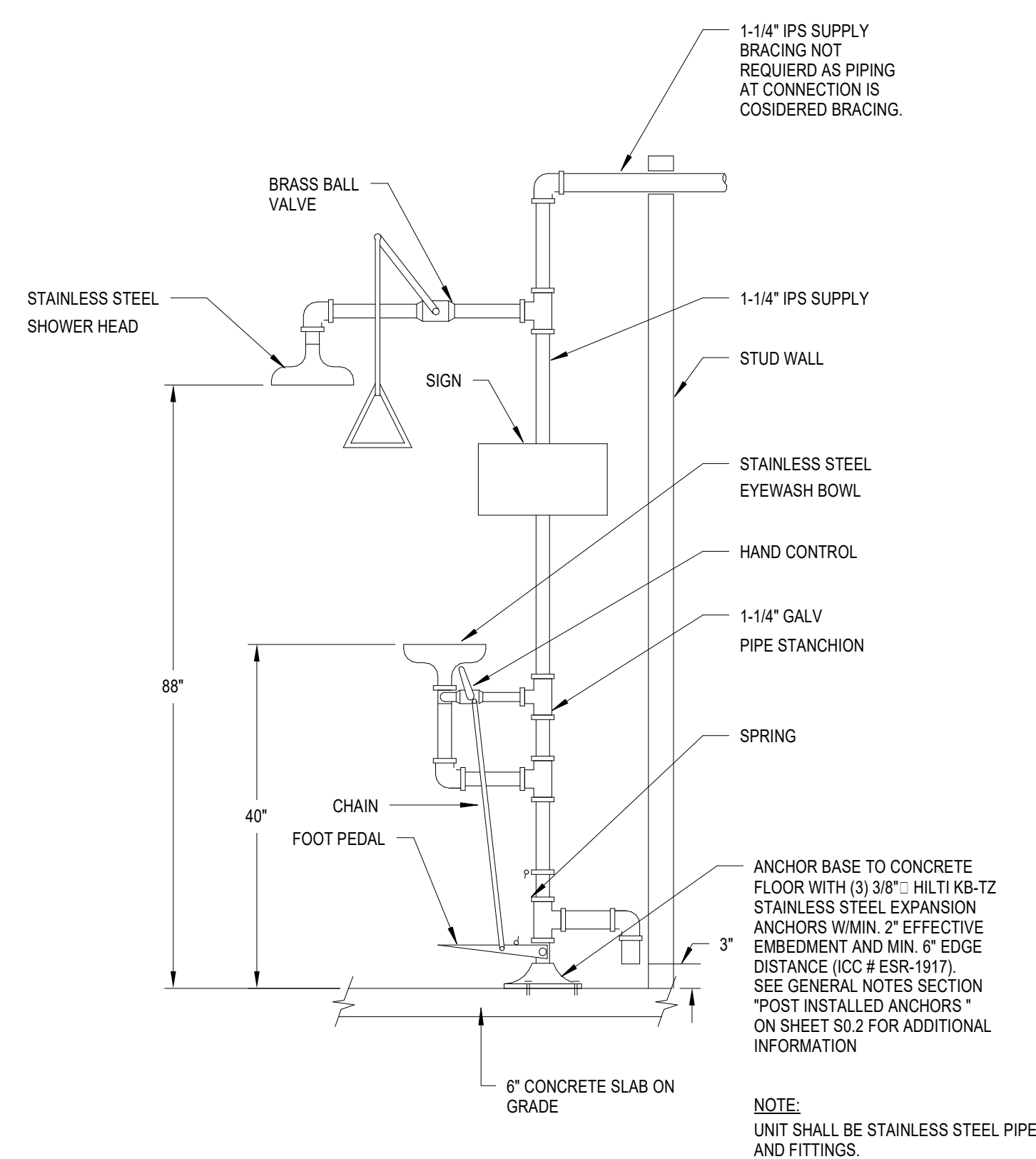
Drawing Title:
**PLUMBING FABRICATION BUILDING 1
 FLOOR AND ROOF PLANS**

Architect's Seal	Designer Designer	Project No. 3443001-302
	Drawn: Author	Scale: 1/4" = 1'-0"
	QA/QC Checker	Drawing No. P2.1
	Date: 10/18/17	

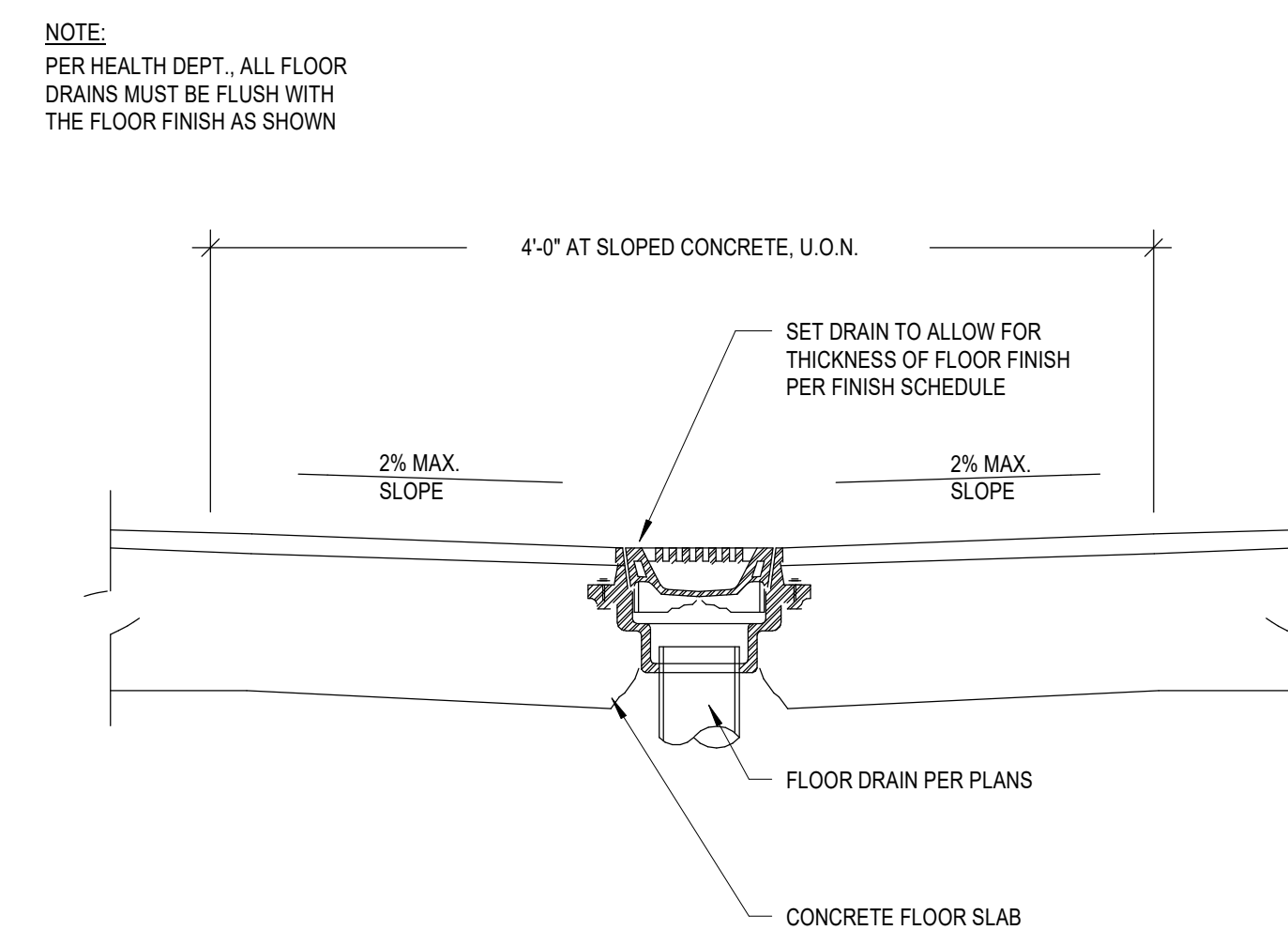


C:\REVIT PROJECTS\8841_CENTRAL_PLBG_avilasenorQPUBN.rvt

KEYNOTES

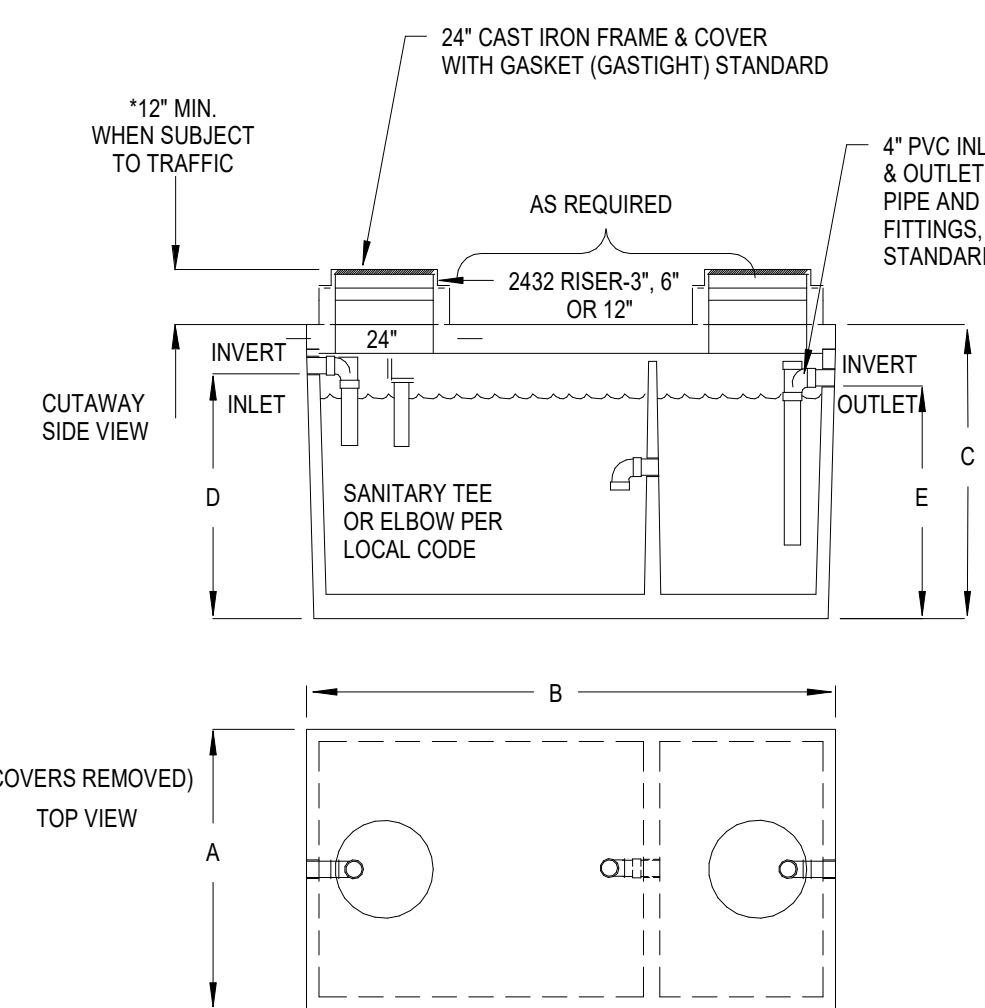


7 EMERGENCY SHOWER/EYEWASH STATION DETAIL
NO SCALE



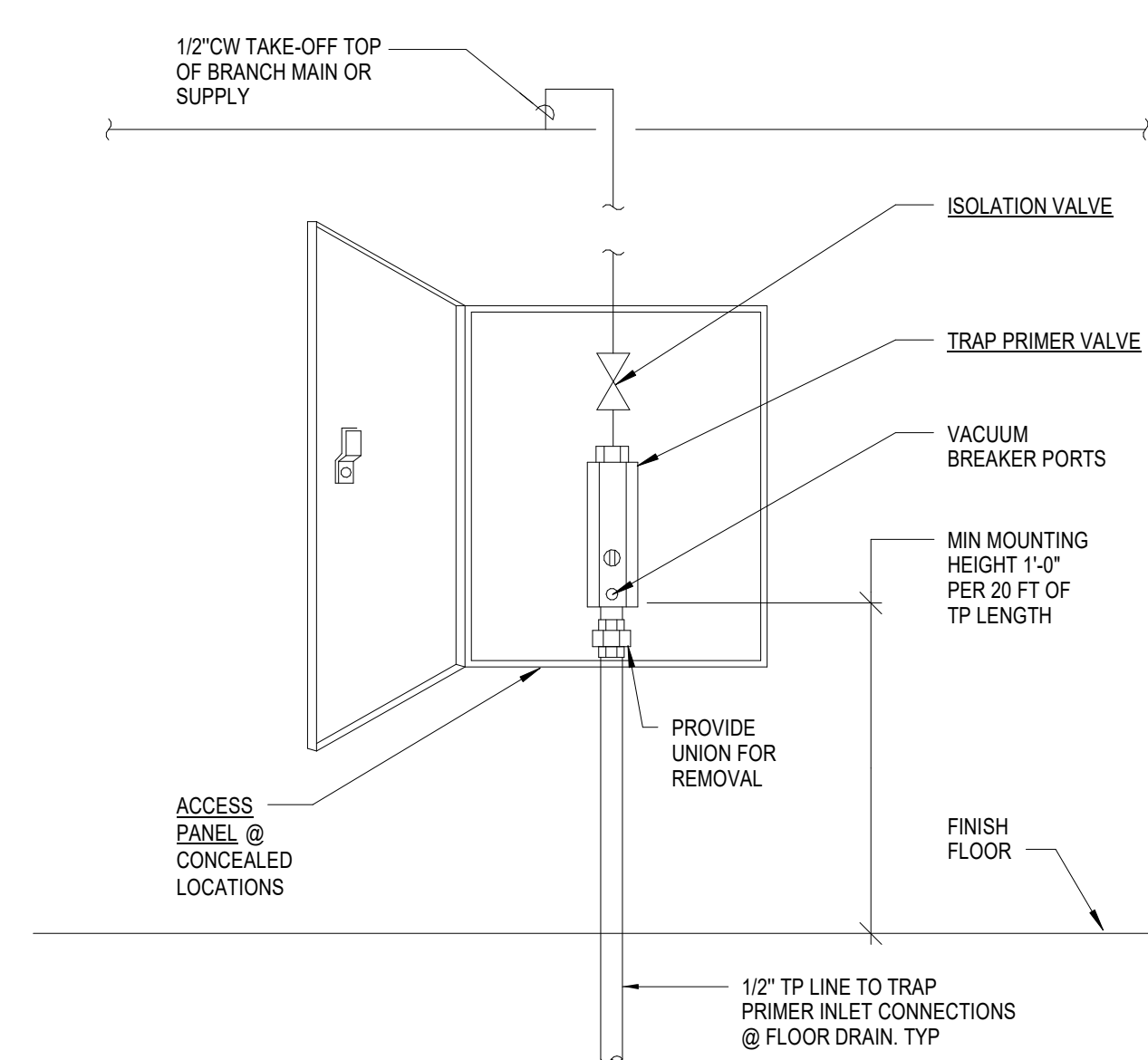
5 FLOOR DRAIN/SINK DETAIL
NO SCALE

NOTES



MODEL NUMBER	LIQUID CAPACITY GALLONS	WIDTH 'A'	COVERALL LENGTH 'B'	TANK HEIGHT 'C'	INLET 'D'	OUTLET 'E'	MAXIMUM EXCAVATION WIDTH	MAXIMUM EXCAVATION LENGTH	DEPTH OF BURY	DEPTH OF BURY
KJP320SQ	320	3'-0"	7'-0"	4'-6"	3'-7"	3'-4"	4'-0"	8'-0"	6" MAX.	6.600

8 SAND-OIL INTERCEPTOR
NO SCALE



6 TRAP PRIMER DETAIL
NO SCALE



5160 Carroll Canyon Rd, Suite 200
 San Diego, California 92121
 Consulting Mechanical Engineers
 858 200-0030 858 200-0037
 www.ma-engr.com

Key Plan



Agency Approval FILE NO. 37-C1
 IDENTIFICATION STAMP
 DIV. OF THE STATE ARCHITECT
 APPL. 04-115420
 ACS FLS SSS
 DATE

Project Title

PALOMAR COLLEGE
 Learning for Success
PALOMAR COLLEGE
 NEW STORAGE BUILDINGS
 1140 W. MISSION RD.,
 SAN MARCOS, CA 92069
 (760) 744-1150

No.	Description	Date
1	ADDENDUM 2	06/08/2018
2	PRE-BID RFI	10/03/2018

Drawing Title:
PLUMBING DETAILS



Designed: Designer Project No. 3443001-302
 Drawn: Author Scale: NO SCALE
 GAOCC Checker Drawing No. P5.2
 Date: 10/18/17